

Panasonic
ideas for life



The new position on performance.

Stingray
envo

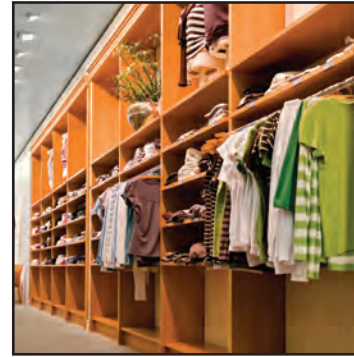
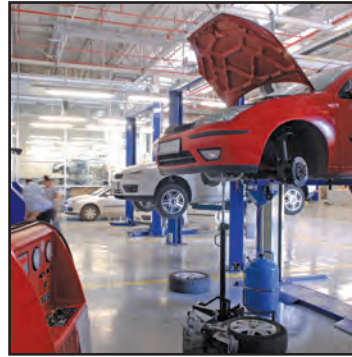


Introducing an Evolution

Panasonic revolutionized the point of sale (POS) market with the introduction of Stingray, the industry's first modular workstation. Now the innovator in POS technology continues to lead the way with the introduction of Stingray Envo. Envo breaks new ground in versatility, with virtually unlimited mounting options ideal for a wide range of applications – and like Stingray, Envo is modular, saving you time and money. In tough economic times, it makes even more sense to choose a brand known for decades as a provider of high quality products that are both durable and reliable. All this makes Stingray Envo the evolution that's right for you, right now.



Stingray
envo



The new position on performance

Why limit your options? Envo is built with a VESA mount, enabling you to place it virtually anywhere. Go beyond the countertop and mount Envo on a wall for drive-thru, on a pole for retail, and in low-profile for table service operations – the options are endless. Envo's modular design helps you be more efficient. Customize Envo to meet your specific needs, without having to pay for features unnecessary to your business. Envo's modular design makes troubleshooting and servicing easy – often without the need for tools – so you can quickly replace key components such as the power supply or hard drive in minutes. Plus, both the processor and RAM are upgradeable when you decide it's time for more speed and performance.



Rugged build for all environments

Rigorous testing at the factory ensures the reliability and dependability you expect from Panasonic. Envoy is IP rated for durability with an aluminum alloy chassis that takes rough treatment without slowing down. Not even short-circuiting a USB port will put Envoy out of service. Its rugged build is right in line with Panasonic's long history of tough, long-lived workstations.

Why LED is better

All of Envoy's screens have the advantages of LED technology. LED backlights produce images with greater contrast, helping your customers and employees view text and images more easily. And they typically consume 20% to 30% less power than conventional LCD screens. When you consider that LEDs are also more reliable, do not need time to warm up and do not yellow over time, it becomes clear that they are the better choice for POS workstations.





2-line Order Confirmation and static POP



12" Interactive Order Confirmation/POP



15" Interactive Order Confirmation/POP



Magnetic stripe readers supports 3 tracks of data



Long life LED touchscreen improves order input speed and accuracy



[View product video here](#)

WiFi™ WiFi capable

More Great Features

- Open Platform to run virtually any software
- Industry-leading speed more than doubles the performance of earlier Stingray models
- Smaller footprint saves valuable space with a sleek, aesthetically pleasing appearance in any workplace environment
- I/O Panel on top of workstation for easier cable management and peripheral troubleshooting
- 10 USB Ports with 2 powered to run peripheral devices like customer facing LCD, cash drawer or printer

More Great Options

- Rear screens engage customers
 - 2-line Order Confirmation and static POP
 - 12" Interactive Order Confirmation/POP
 - 15" Interactive Order Confirmation/POP (touchscreen optional)
- Magnetic stripe readers (MSR) speed service, add functionality
 - MSR supports 3 tracks of data
 - MSR with fingerprint improves business efficiency; integrates with MSR for cleaner appearance
- Touchscreen improves order input speed and accuracy
 - Resistive or capacitive
 - Long life LED backlight for industry leading brightness
 - Adjustable for user comfort

Envo's smart design helps streamline business

- 2 HDD or SDD with RAID provides more storage options
- More power to run other technology from the workstation such as back office applications or digital signage without the POS performance suffering
- Built-in speakers pointed down
 - Won't interfere with customer interaction
 - Protected from spills
 - Allows training videos to run on workstation
- Super quiet fan won't interfere with customer communications
- No extra parts required under the counter simplifies installation, maintenance



Eco Ideas

Our Eco Ideas initiative is Panasonic's pledge to reduce our global carbon footprint and increase the number of energy-efficient products we manufacture. With power consumption less than half that of earlier Stingray models, Envo meets U.S. Environmental Protection Agency ENERGY STAR requirements for reduced energy usage and longer life.